

YAMAHA CELL HANDLER™ accelerates High Throughput Screening

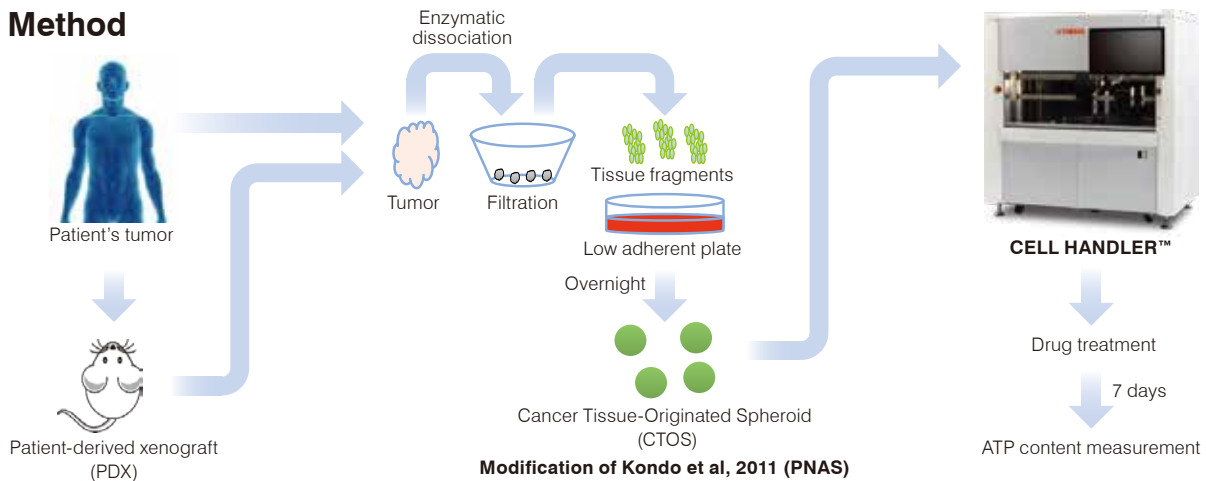


Application of YAMAHA CELL HANDLER™ in three dimensional (3D) culture- based drug screening of patient-derived cancer spheroids
 Data provided by Dr. Warren

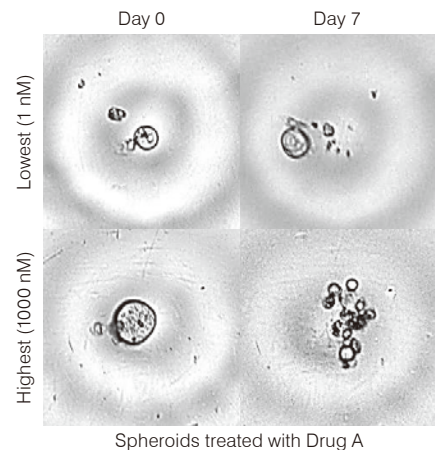
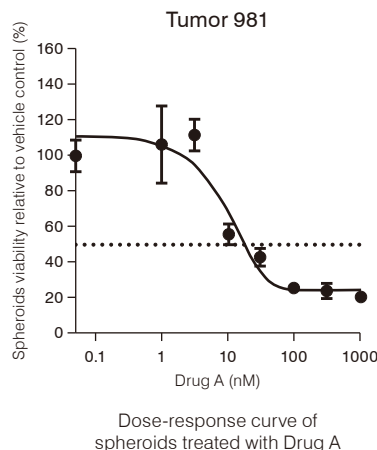
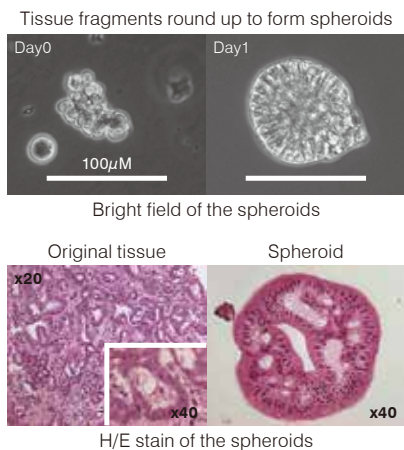
Introduction

The drug screening based on three-dimensional culture or Organoids is a state-of-the-art in precision medicine. We applied the YAMAHA CELL HANDLER™ to moderate throughput drug screening against patient-derived cancer spheroids.

Method



Results



Conclusion

YAMAHA CELL HANDLER™ is useful in rapid drug screening of patient-derived cancer spheroids.

